

DUAL ACTIVE[®]

WWW.K1MEDGLOBAL.COM

FOCUS SHOCKWAVE

SET THE NEW STANDARD

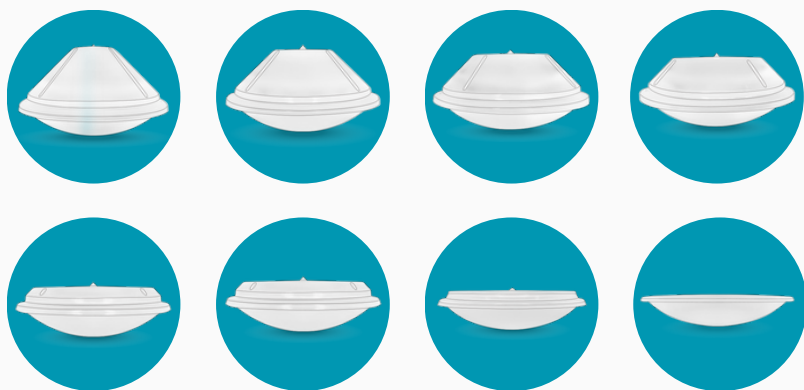


More Possibilities Better Care

High-Power Focused Shockwave Technology

Equipped with approximately 200 individual PIEZO elements, this system generates shockwaves that are precisely focused on a single point for maximum effectiveness.

With each pulse, a high voltage of 8,000V is simultaneously applied to all PIEZO elements, producing exceptionally strong extracorporeal energy. Delivering an impressive maximum output of 82 MPa, this technology ensures powerful, targeted performance for the most demanding applications.



Piezo Electric

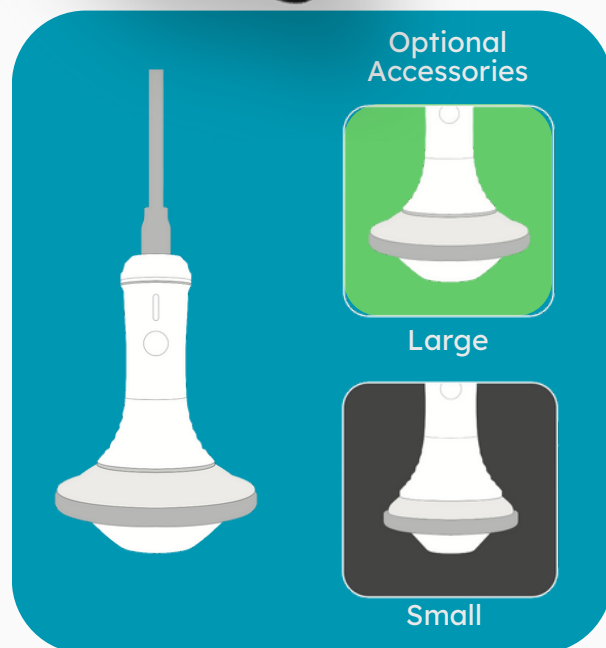
High-Power Focused Shockwave Technology

Equipped with approximately 200 individual PIEZO elements, this system generates shockwaves that are precisely focused on a single point for maximum effectiveness.

With each pulse, a high voltage of 8,000V is simultaneously applied to all PIEZO elements, producing exceptionally strong extracorporeal energy. Delivering an impressive maximum output of 82 MPa, this technology ensures powerful, targeted performance for the most demanding applications.

10 Million Shocks Warranty

Dual Active F offers the highest warranty in the market, covering up to 10 million shocks for the large applicator and 5 million shocks for the small applicator within 2 years, ensuring unmatched durability and reliability.



Intuitive Design

Effortlessly select the ideal mode for each treatment area, with optimized parameters automatically saved for consistent, effective results.

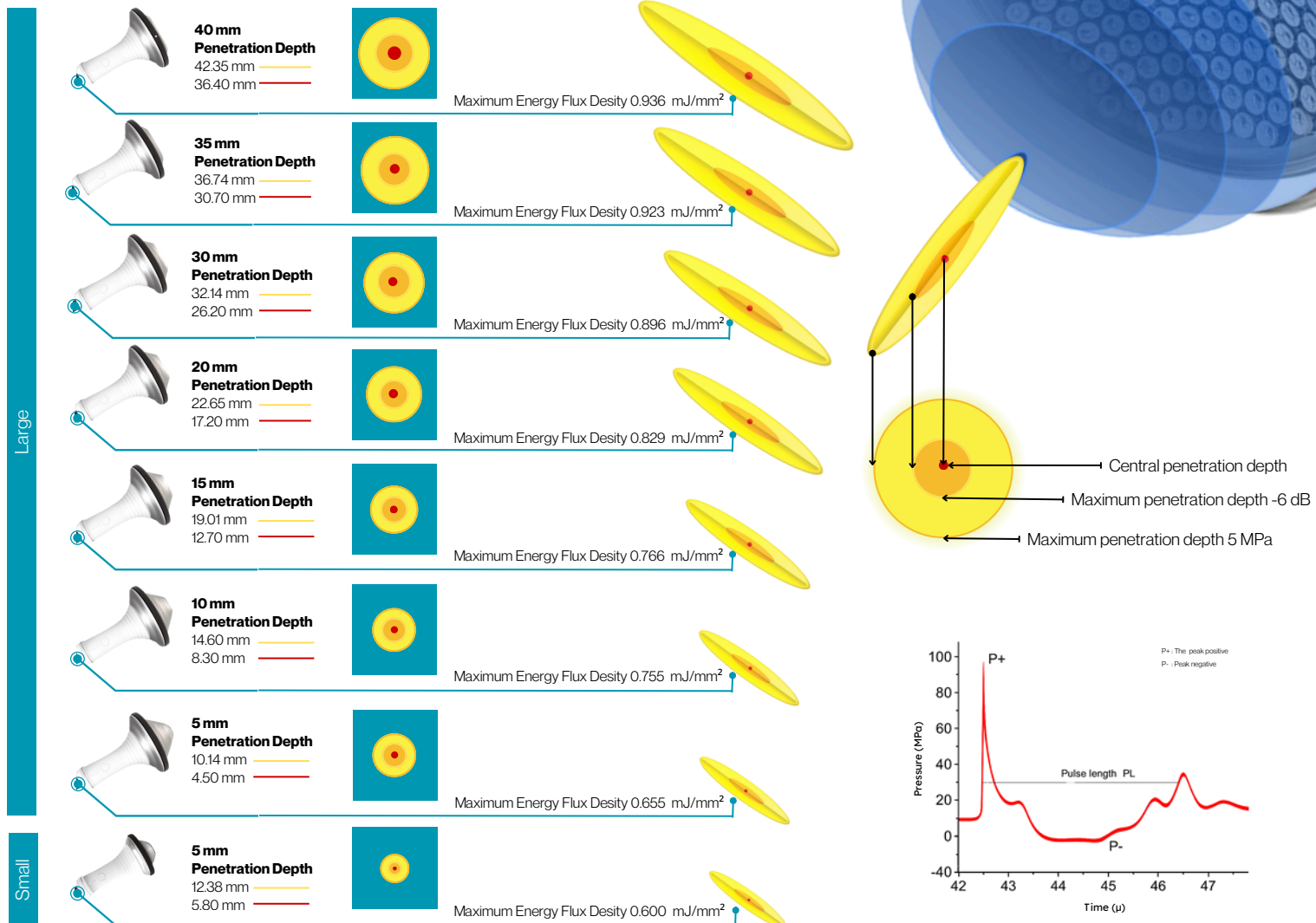
DUAL ACTIVE^F

Advantages

- Dual-Handle Convenience – Optional large or small second handle.
- Adjustable Intensity – Levels 1–25 for precise control.
- Versatile Frequency – 1–8 Hz range for varied treatments.
- Large Display – 12" touch screen for easy operation.
- User-Friendly – Intuitive interface for quick setup.

Focal Size & Penetration Depth

Double the Applicators, Double the Efficiency



Technical Parameters

FOCUS SHOCKWAVE : DUAL ACTIVE-F

Technical Specifications

Parameters

Power Voltage	100-240Vac, 50/60Hz
Power Consumption	350VA
Intensity Level	1-25, 0.1 - 0.9 Level
Frequency	1-8 Hz (1Step)
Dimension	W405 x L488 x H406 (mm)
Weight	24 KG.
Piezoelectric Cells	200
Display	12 Inches / Touch Screen
No. of Gel Pads	8
Output Channel	2

Technical Specifications

Parameters

Electrical Safety	IEC60601-1, IEC60601-2
Device warranty	2 years
Applicator warranty	10 Million Shocks (Large)



Rm.201, Woolim e-biz center II, 12, Digital-ro 33-gil, Guro-gu, Seoul,
Korea [08377]
TEL. +82 2 866 0657 FAX. +82 2 866 0658 URL.
www.k1medglobal.com E-MAIL. k1@k1medglobal.com